

PURLINE organic flooring | wineo 1500

Installation instructions plank for gluing



PURLINE organic flooring wineo 1500 plank for gluing is a high-quality polyurethane flooring. It is based on ecuran, a high-performance composite material made predominantly from vegetable oils such as rapeseed or castor oil and naturally occurring mineral components such as chalk.

Below we would like to inform you about the special requirements for a successful installation of **PURLINE organic flooring wineo 1500 plank for gluing**. Please note that polyurethane flooring is a separate product category according to EN 16776 and please follow the installation instructions. For more information, please refer to the technical specifications in our product collections.

Important general information:

Before processing, make sure that the delivered goods are in perfect condition. Goods that have been cut to size or laid are not subject to complaint. Before installation, the goods must be checked for colour and batch uniformity. Only install planks/tiles of the same batch in one room.

The relevant national standards, guidelines and regulations, together with the technical documents and generally acknowledged rules of the trade, apply when installing **PURLINE organic flooring wineo 1500 plank for gluing**.

Notice:

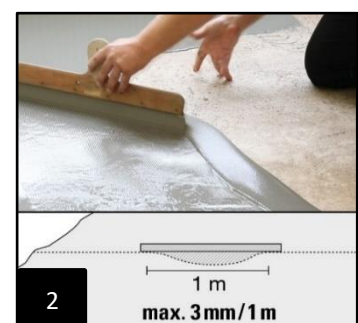
The flooring installer must check the subfloor's readiness for installation before installing the flooring and raise any concerns. Especially in case of:

- major unevenness
- insufficiently dry subfloor.
- insufficiently firm, too porous and too rough surface of the subfloor,
- contaminated surface of the substrate, e.g. by oil, wax, varnish, paint residues,
- incorrect height of the surface of the substrate in relation to the height of adjacent components,
- unsuitable temperature of the substrate,
- unsuitable room climate,
- missing heating protocol in case of heated floor constructions,
- missing protrusion of the edge insulation strip,
- missing marking of measuring points in case of heated floor constructions,
- missing joint plan.

In order to level out unevenness and to obtain a uniform absorbent substrate, it is recommended to apply a suitable leveling compound (2) in sufficient layer thickness using the squeegee technique. Non-absorbent substrates or substrates sealed against rising damp must be leveled to a layer thickness of at least 3 mm. Please observe the instructions of the building material suppliers. When gluing wineo 1500 Plank to underfloor heating systems, EN 1264-2 (Room surface integrated heating and cooling systems with water flow part 2) must be taken into account. The surface temperature should not exceed 27°C permanently.

For the installation you will need the following tools (1):

1. pencil
2. scale rule/tape measure
3. dolphin knife with hook and trapezoid blade
4. chalk line
5. adhesive spatula with A2 size teeth
6. linocut
7. hand pressure roller
8. pressure board
9. segmented roller min. 50 KG (110lbs)



PURLINE organic flooring | wineo 1500

Installation instructions plank for gluing



Acclimatization:

wineo 1500 plank for gluing as well as all required auxiliary materials must be acclimatized in small stacks (3) in the rooms to be installed for at least 24 hours before installation under the following conditions!



Room climatic conditions:

- Room air temperature > 18°C (but not more than 26°C).
- Floor temperature > 15°C (but not more than 22°C)
- Relative humidity < 65%

It must be ensured that constant room climatic conditions exist during the acclimatization as well as the setting phase of the adhesive. The above-mentioned room climate must be maintained for at least 72 hours before, during and after bonding of the covering.

Installation:

In order to achieve an optimal installation result with as little material waste as possible, we recommend measuring the area to be covered and dividing it according to the material format and installation pattern (4). We recommend that you transfer the dimensions of the first three panel rows, including the edge distance, to the subfloor by means of a chalk line (5).

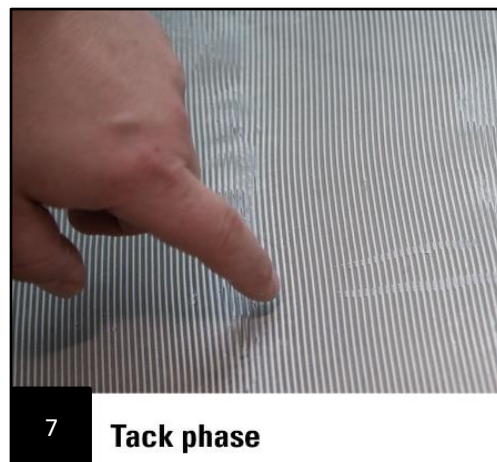
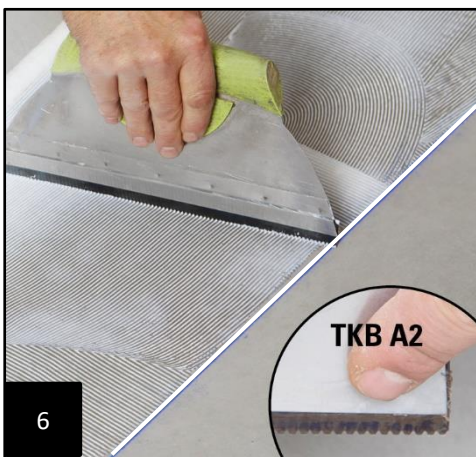


PURLINE organic flooring | wineo 1500

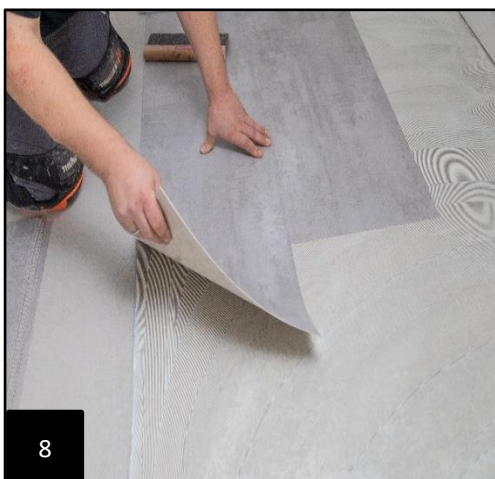
Installation instructions plank for gluing



Now apply the adhesive (6) approved by Windmüller GmbH evenly according to the adhesive manufacturer's instructions using the TKB toothed strip recommended for this purpose (usually TKB A2 toothing). We recommend the use of low-emission and solvent-free dispersion adhesives, e.g. EC1 or RAL (Blue Angel). For more information, please refer to our adhesive recommendation. The processing guidelines of the adhesive manufacturers must be observed. Allow the adhesive to flash off according to the manufacturer's instructions, taking into account the room climate conditions. Now place the covering in the adhesive bed in the "tack phase" (7). (Attention: no adhesive bed bonding).



The individual **PURLINE planks/tiles** must be laid in the adhesive bed in a joint-tight and tension-free manner (8). In order to achieve a visually appealing installation pattern, we recommend ensuring sufficient joint offset (approx. 30 cm for plank formats) (9).

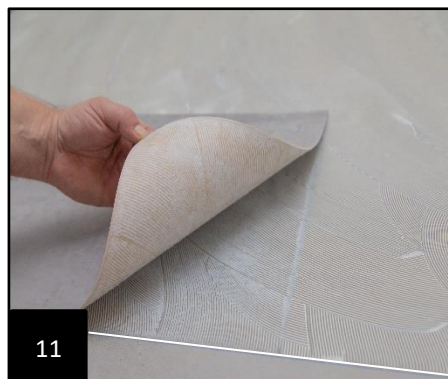


PURLINE organic flooring | wineo 1500

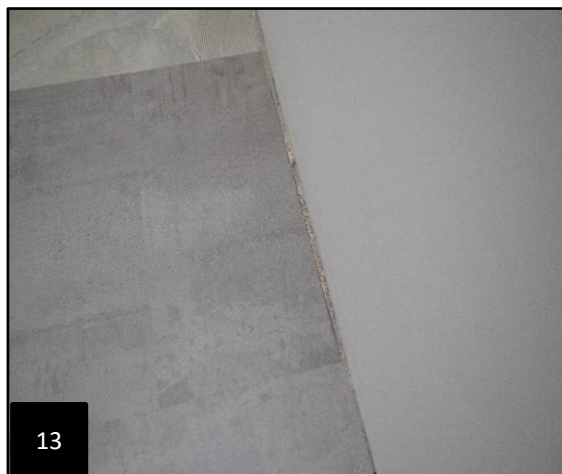
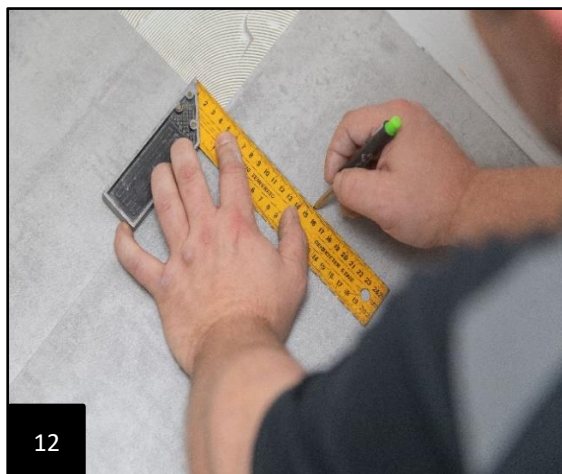
Installation instructions plank for gluing

wineo
THAT'S FLOORING

The elements are then pressed down over the entire surface with a suitable pressing tool. A hand-operated pressure roller or a pressure board (10) is recommended for this purpose. In order to achieve an ideal installation and utilization result, it is important to ensure good adhesive wetting (11) of the covering backing.



Now mark the element to be used (12) and cut it to fit exactly so that the edge joints (13) remain open to avoid sound bridges and compression on walls and door frames.



PURLINE organic flooring | wineo 1500

Installation instructions plank for gluing

wineo
THAT'S FLOORING

To achieve a clean and even transition to existing/adjacent floor coverings, we recommend the use of a Linocut (14/15).



After the elements have been manually rubbed down and cut to size, the covering (16) is rolled evenly and slowly using a segmented roller (weight min. 50 kg / 110lbs). A hand pressure roller (17) is recommended for the inaccessible area of the sectional roller, especially in the edge area.



The installed surface should not be put into operation/loaded until the adhesive has set completely (follow the adhesive manufacturer's instructions). Please note that the contractor has a maintenance obligation (protection of the floor covering against damage by subsequent trades) for a completed but not yet accepted trade. Please use only vapor-open covering material. Partial acceptance transfers the maintenance obligation for the accepted areas to the client.

Cleaning and care:

Please refer to our detailed cleaning and detergent recommendation at www.wineo.de!

With the publication of these installation instructions (as of 02/2021), all previous versions lose their validity.